

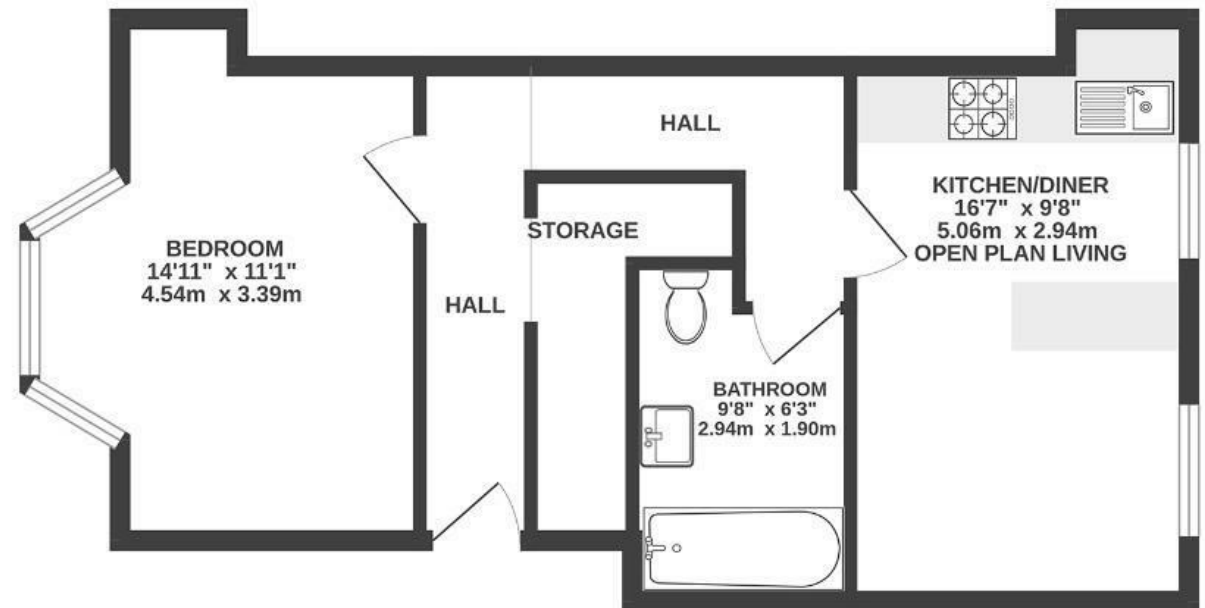
Albany Road

MONTPELIER

APPROXIMATE FLOOR AREA
43 SQM / 465 SQFT



GROUND FLOOR



~~Boardwalk~~

Albany Road , BRISTOL

£

£240,000



BS6 5LQ

zzz

1 Bedrooms



1 Bathrooms

"I love my morning routine of making a coffee and sitting on my sofa in the sun. Friday evenings at Wiper and True around the corner, followed by a pizza at Cafe Napolita have become regular, as too have walks up to St. Andrews park to sit in the sun."

